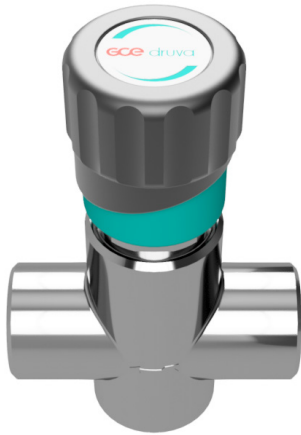


VPLDCMAR – DRUVA®PUR REGULATING VALVE WITH SHUT-OFF FUNCTION

VALVE | PURE LINE (STAINLESS STEEL) | 20 m³ SERIES |
 DIAPHRAGM REGULATING VALVE WITH SHUT OFF FUNCTION | MANUAL ACTUATION | 2-PORT VERSION



2-port metal diaphragm regulating valve with shut-off function is used in supply systems for pure, inert, flammable, oxidizing gases and gas mixtures. Not usable for corrosive and toxic gases and gas mixtures. Maximum gas purity is 6.0.

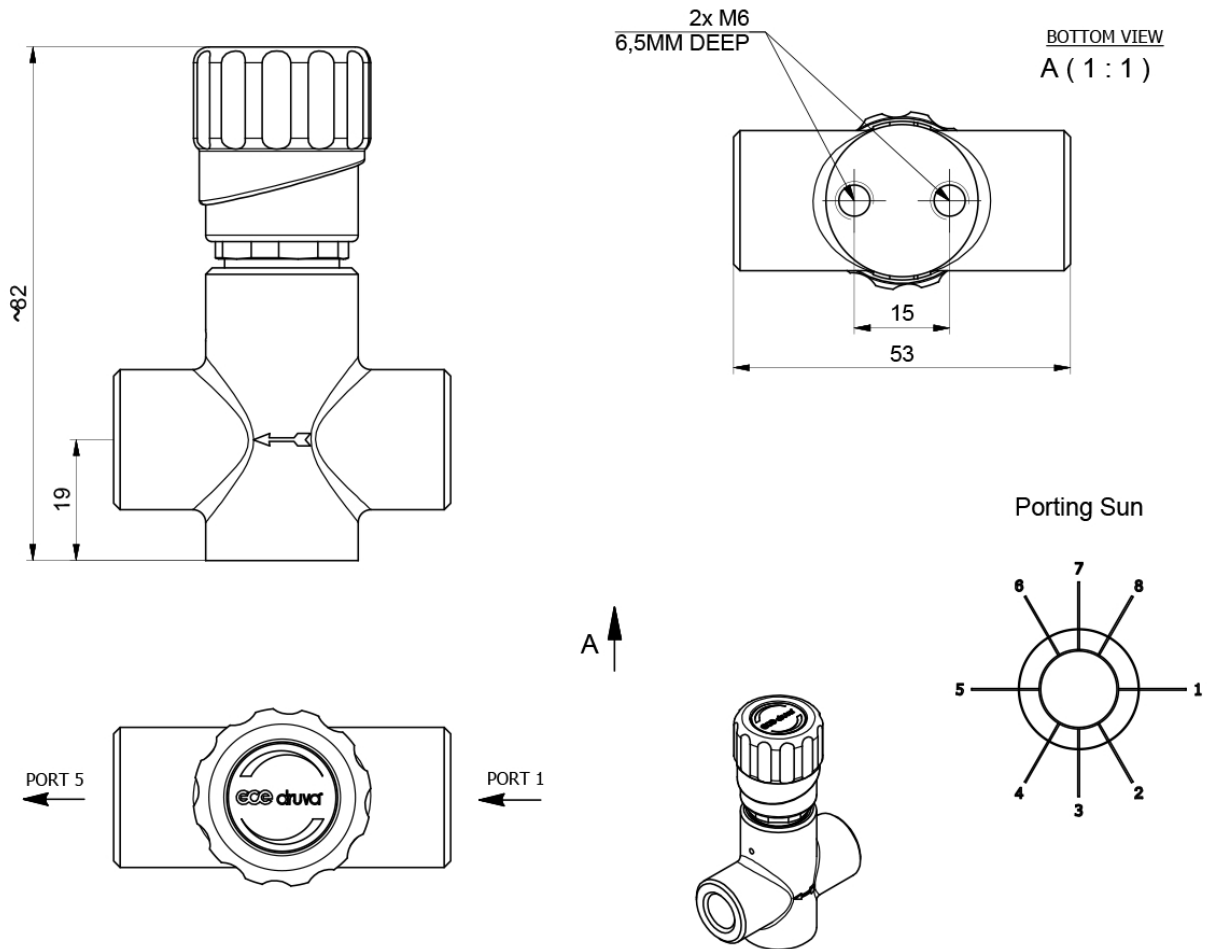


SPECIAL FEATURES:

- > Hastelloy diaphragm tightening system to atmosphere
- > Compact design
- > Designed and approved in accordance with relevant sections of ISO 10297:2015
- > Electrostatic chargeability test
 - Fulfills requirements according to ISO 80079-36; IEC TS 60079-32-1 and German TRGS 727
 - Usable in EX- areas zones 1 and 2 for gases with explosion risk group I; IIA; IIB; IIC

TECHNICAL DATA	
Working temperature:	-20 °C to +60 °C
Inlet / outlet ports:	1/4" NPT female Further connections – see technical drawing
Max. working pressure:	50 bar
Cv-value:	< 0,02
Seat diameter:	2 mm
Leakage rate seat:	<5x10 ⁻⁶ mbar l/s (Helium)
Leakage rate outside:	<1x10 ⁻⁹ mbar l/s (Helium)
Filter	1x for each inlet 1x for each outlet
Weight:	0,30 kg
Material gas wettet parts:	
Valve body:	Brass chrome plated
Valve diaphragm:	1x Hastelloy
Valve seat:	PCTFE
Valve poppet:	Brass
Test in production:	Pressure test with Helium of each item
	Seat leakage test with Helium of each item
	Helium leak test of each valve against atmosphere
	Test of functionality of each item
Approvals during development:	Typetest in accordance with relevant sections of ISO 10297
	Electrostatic chargeability test
	<ul style="list-style-type: none"> • Fulfill requirements according ISO 80079-36, IEC TS 60079-32-1 and German TRGS 727 • Usable in EX-areas zones 1 and 2 for gases with explosion risk group I, IIA, IIB, IIC

TECHNICAL DRAWING



- N14F - NPT1/4" female
- 0000 - without (Port 3 & Port 7)
- M03B - Compression Fitting ø 3 MM Brass
- M06B - Compression Fitting ø 6 MM Brass
- M08B - Compression Fitting ø 8 MM Brass
- M10B - Compression Fitting ø 10 MM Brass
- M12B - Compression Fitting ø 12 MM Brass
- M03S - Compression Fitting ø 3 MM SST
- M06S - Compression Fitting ø 6 MM SST
- M08S - Compression Fitting ø 8 MM SST
- M10S - Compression Fitting ø 10 MM SST
- M12S - Compression Fitting ø 12 MM SST
- IX2B - Compression Fitting ø 1/8" Brass
- IX4B - Compression Fitting ø 1/4" Brass
- IX6B - Compression Fitting ø 3/8" Brass
- IX8B - Compression Fitting ø 1/2" Brass
- IX2S - Compression Fitting ø 1/8" SST
- IX4S - Compression Fitting ø 1/4" SST
- IX6S - Compression Fitting ø 3/8" SST
- IX8S - Compression Fitting ø 1/2" SST

ORDER CODE:

Example for a Valve | PUR Linie | Brass Chrome Plated | Low Flow | Diaphragm regulating valve with shut-off function | Manual Actuation | 2-Port Version

VPL	DC	M	AR	EX	N14F (1/4" NPT female)	0000	N14F (1/4" NPT female)	0000
Type	Actuation	Porting Code	Working Pressure (bar)	Connection Port 1	Connection Port 3	Connection Port 5	Connection Port 7	
DS Diaphragm regulating valve with shut-off function	M Manual	AR 2-Port (1 In 5 Out)	EX 50	possible connection see technical drawing	0000 without	possible connection see technical drawing	0000 without	

Order code (as described above) without special characters or spaces! Complete Order Code [VPLDCMAREXN14F0000N14F0000](#)

